



GIA®

GIA GEMOLOGICAL REPORT

SAPPHIRE ORIGIN REPORT

GIA REPORT 5191416537

June 6, 2018

DETAILS

Shape..... **Octagonal**
 Cutting Style **Step Cut**
 Transparency **Transparent**
 Color..... **Blue**

RESULTS

Species..... **Natural Corundum**
 Variety..... **Sapphire**
 Geographic Origin **Sri Lanka**

TREATMENT (Scan QR code for more information)

Heated

Item Description: One loose stone

Weight: **13.25 carats**

Measurements: **14.37 x 11.16 x 8.30 mm**

Comments: Any statement on geographic origin is an expert opinion based on a collection of observations and analytical data.

FACSIMILE This is a digital representation of the original GIA Report. This representation might not be accepted in lieu of the original GIA Report in certain circumstances. The original GIA Report includes certain security features which are not reproducible on this facsimile.

To learn more about how GIA determines and classifies gemstone origin, as well as maps describing localities, go to reportcheck.gia.edu to view this report.

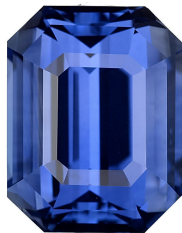


Image is approximate

reportcheck.gia.edu

The results documented in this report refer only to the article described, and were obtained using the techniques and equipment used by GIA at the time of examination. This report is not a guarantee or valuation. For additional information and important limitations and disclaimers, please see www.gia.edu/terms or call +1 800 421 7250 or +1 760 603 4500. ©2015 Gemological Institute of America, Inc.



 THE SECURITY FEATURES IN THIS DOCUMENT, INCLUDING THE HOLOGRAM, QR CODE AND MICROPRINT LINES, IN ADDITION TO THOSE NOT LISTED, EXCEED DOCUMENT SECURITY INDUSTRY GUIDELINES.